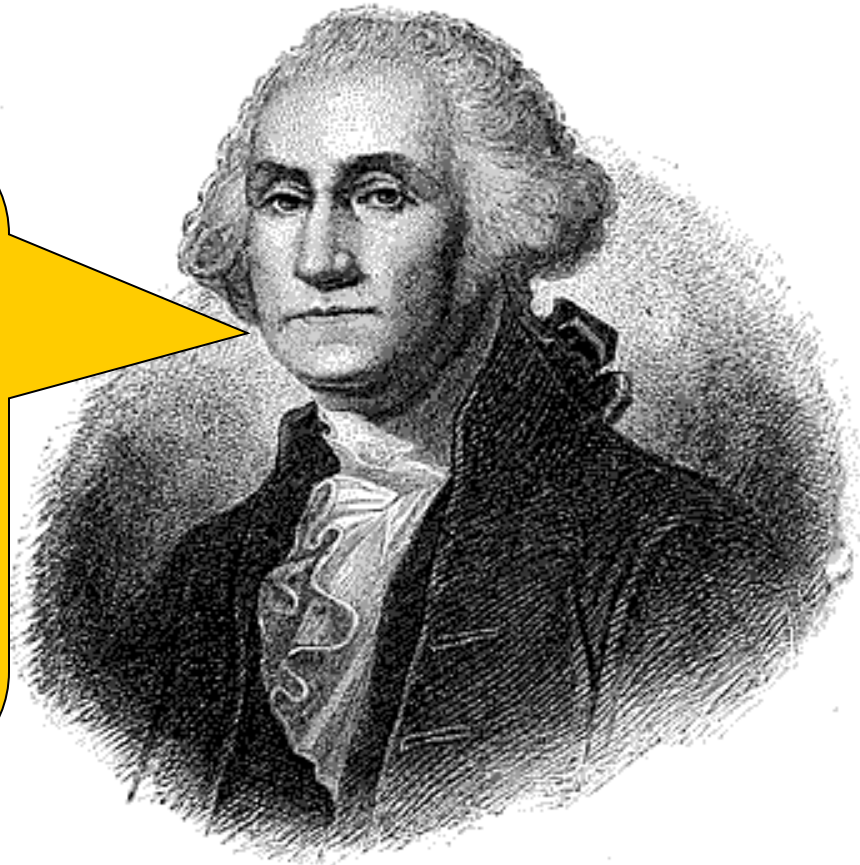


# The First Political Parties

Chapter 10/ Lesson 3

**What were seen as a threat to national unity?**

Political parties  
will surely lead to  
jealousies and  
false alarms!!



WASHINGTON

FACTION

FACTION

FACTION

FACTION

FACTION

FACTION

FACTION

FACTION

FACTION



HAMILTON



JEFFERSON

FACTION

FACTION

FACTION

# Why did POLITICAL PARTIES develop?

There were... major differences of opinion about the way the new nation should be governed.

Each side... decided to organize the supporters of their viewpoint.

**Federalists**

**vs.**

**Democratic  
Republicans**



**Federalists**

**Led by**

**Alexander  
Hamilton**



# Democratic Republicans

Led by

Thomas  
Jefferson



Believed wealthy and  
well-educated should  
lead nation



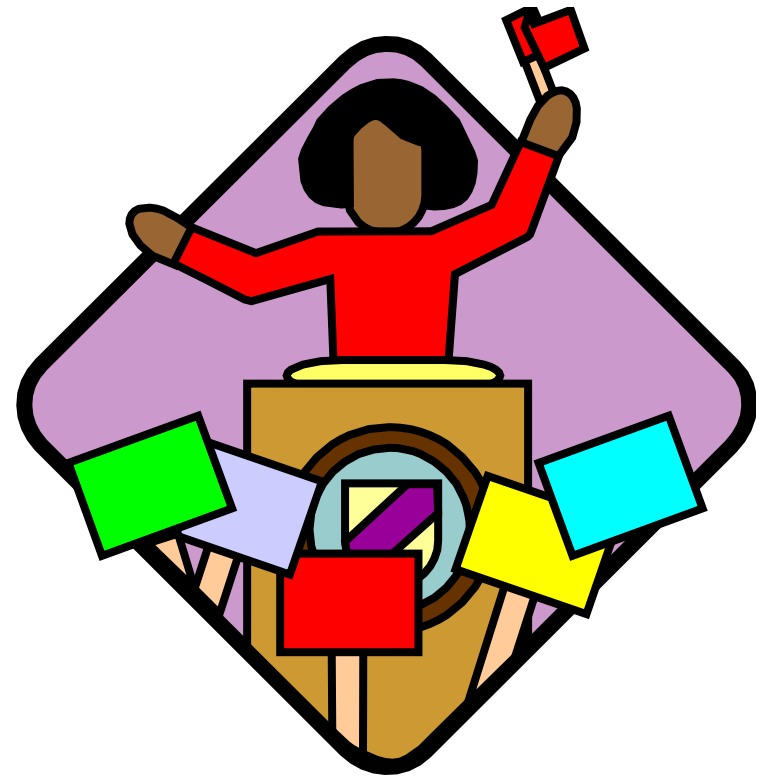
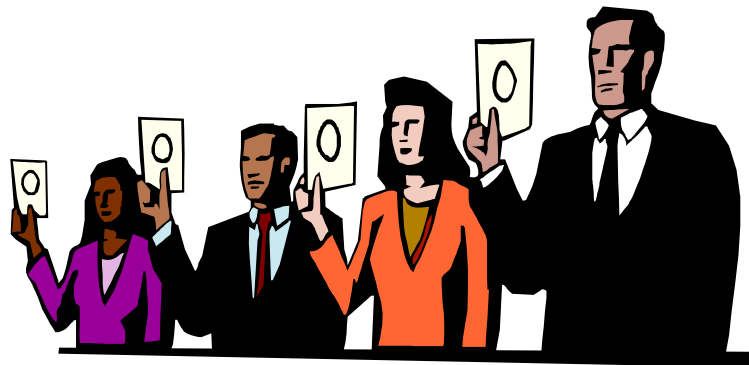
+



**Federalists**



Believed ALL people should have political power



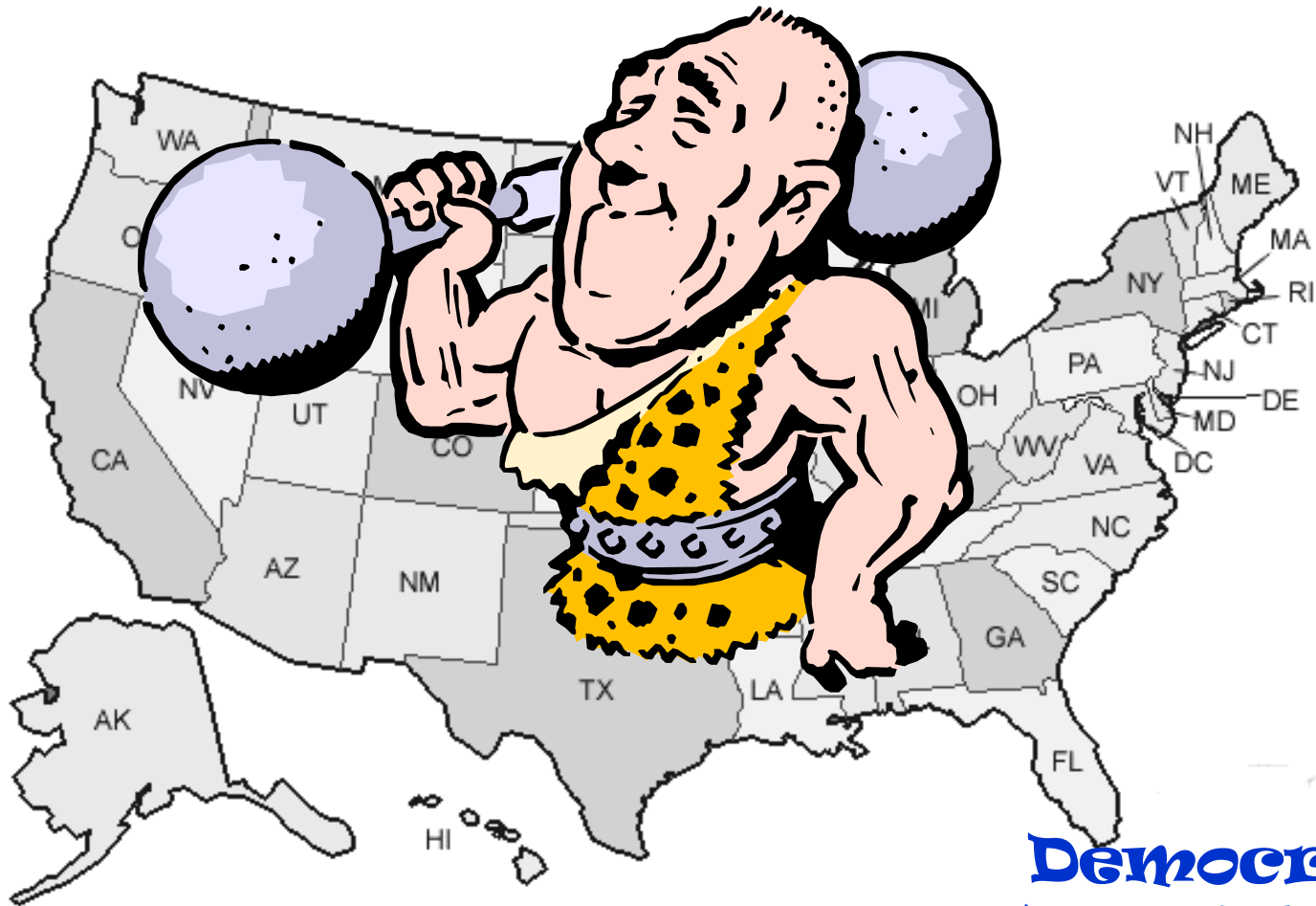
**Democratic  
Republicans**

Favored a strong central  
(federal) government



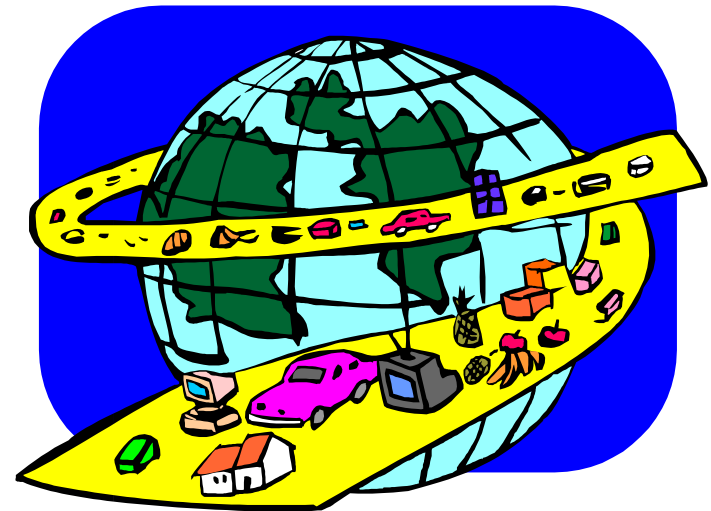
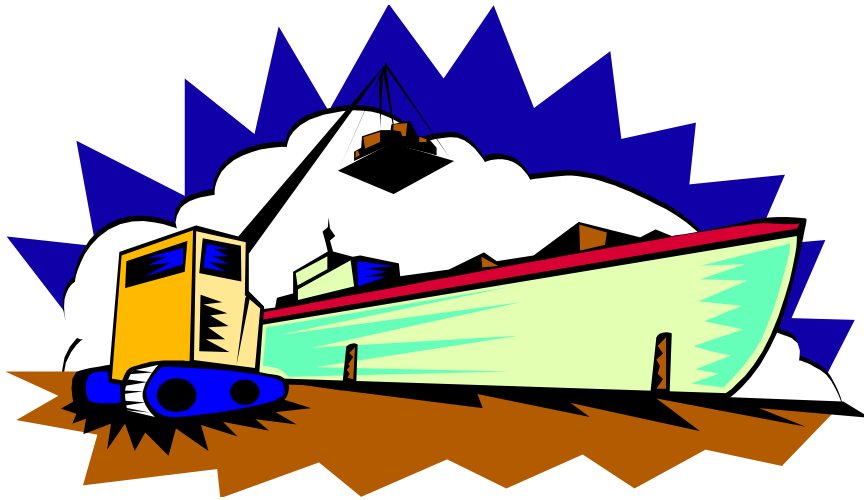
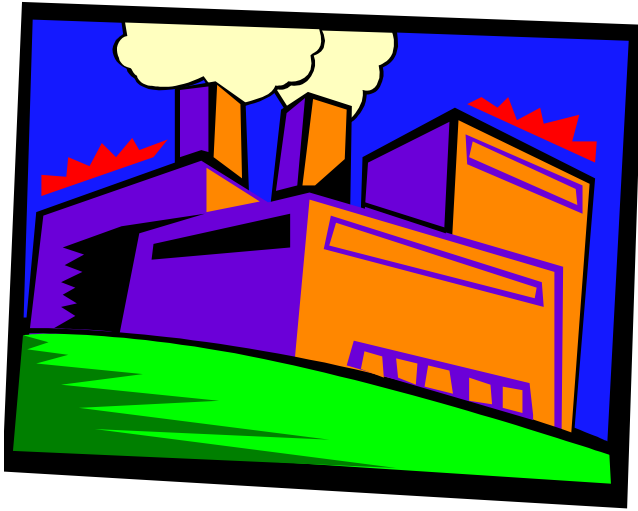
**Federalists**

# Favored strong state governments



**Democratic  
Republicans**

Emphasized  
manufacturing,  
shipping and  
trade



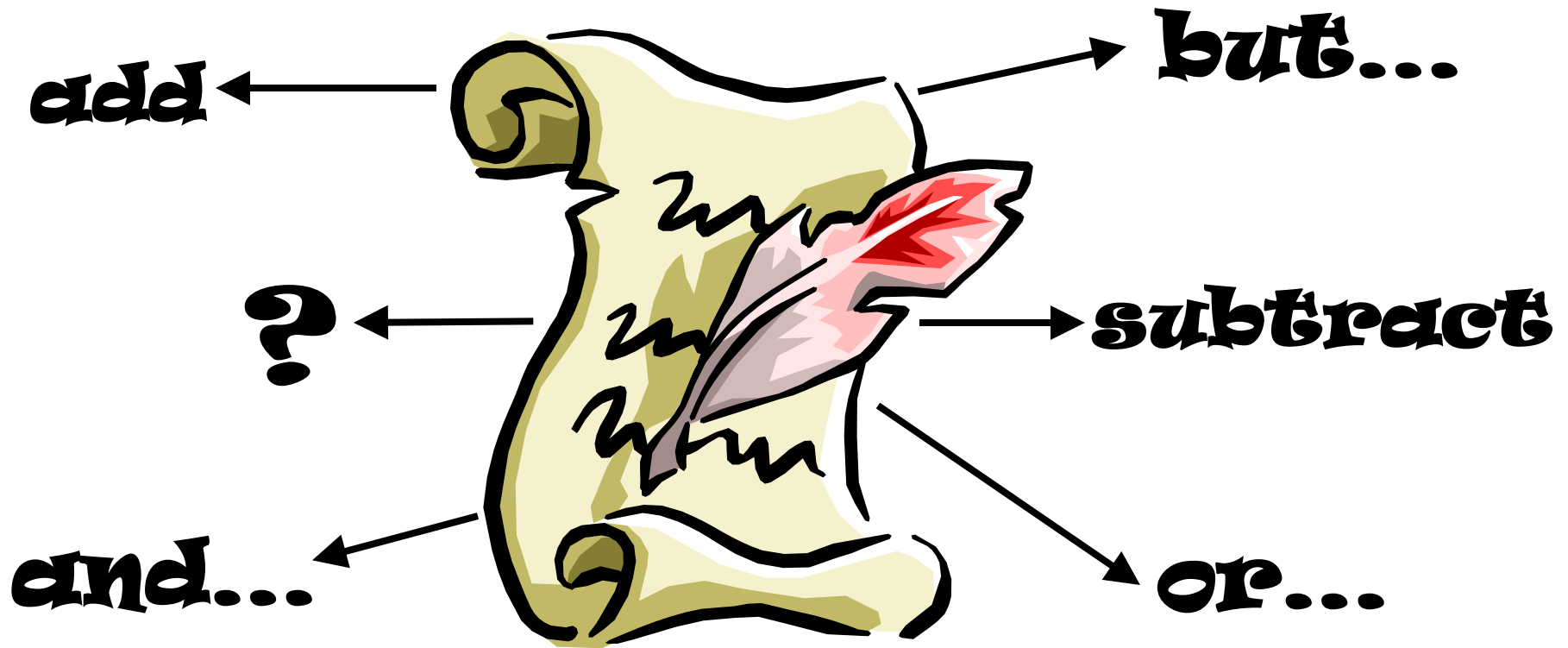
**Federalists**

# Emphasized agriculture



**Democratic  
Republicans**

# Favored a loose interpretation of the Constitution



**Federalists**



# Favored a strict interpretation of the Constitution



**Democratic  
Republicans**

# Were Pro-British



**Federalists**

# Were Pro-French



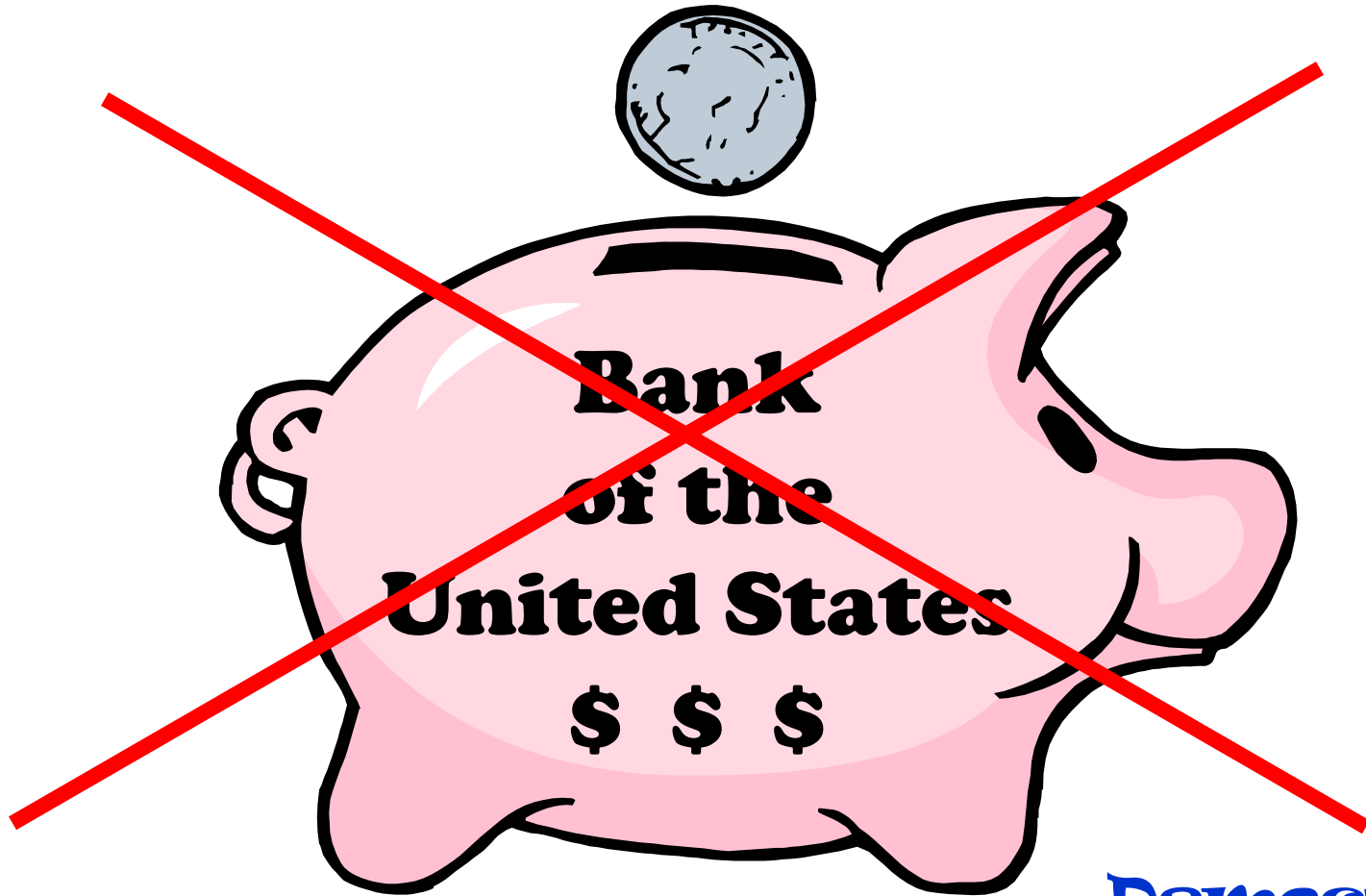
**Democratic  
Republicans**

# Favored a National Bank



**Federalists**

# Opposed a National Bank



**Democratic  
Republicans**

# Favored a Protective Tariff



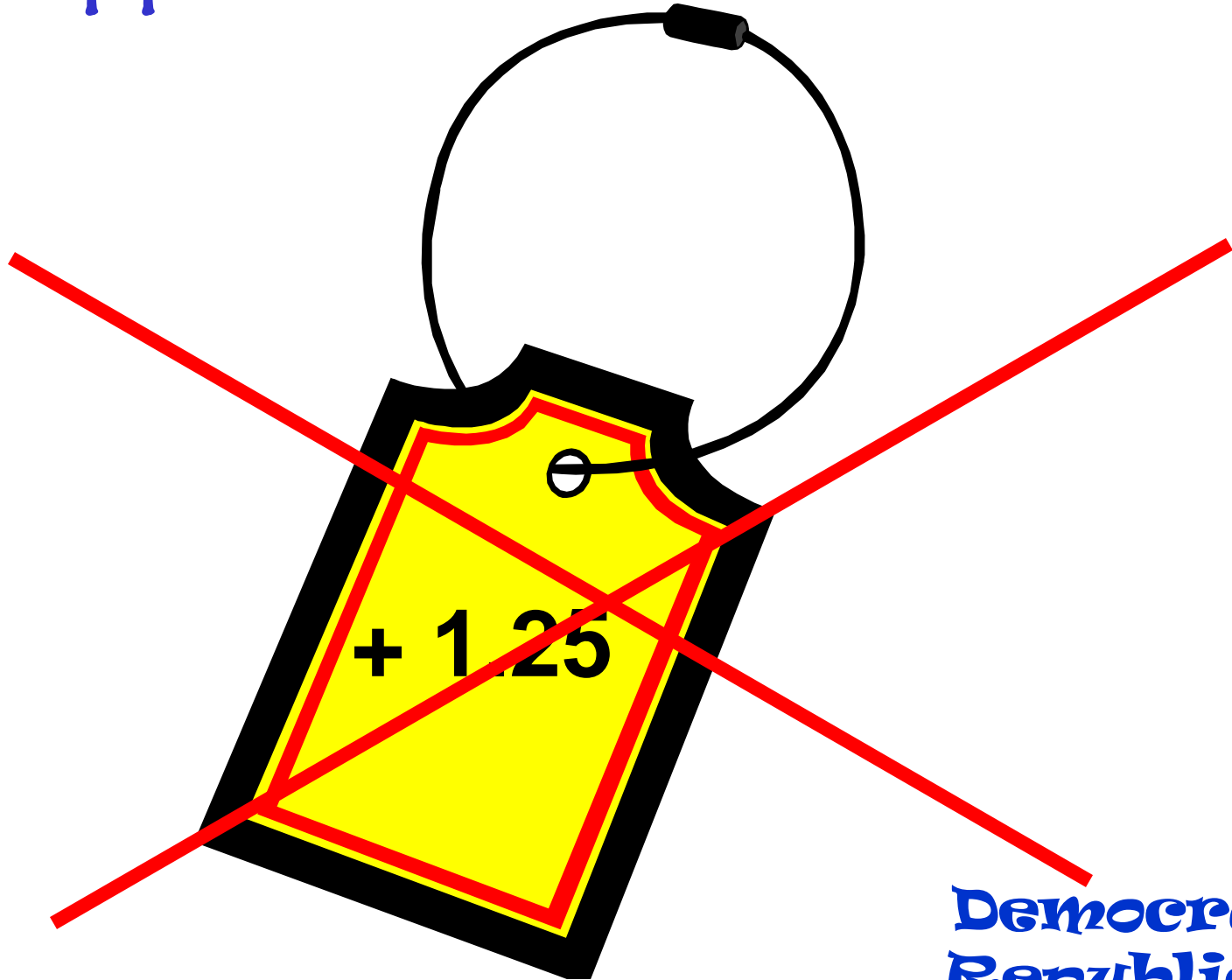
**Federalists**



**Foreign goods**



# Opposed a Protective Tariff



**Democratic  
Republicans**

# \*Note:

'Republicans' is short for  
**Democratic  
Republicans**

Today this group is the  
**Democratic Party**, NOT the  
Republican Party (began in 1854).

**Time Warp:**  
**Which political party would you join in 1796? Why?**

Use this **Think/Pair/Share** time to decide on your Occupation in 1796. Then send a "tweet" about how your chosen profession would influence your choice of a political party...

# Time Warp: Which political party would you join in 1796? Why?

1796 Occupation:

---



Twitter? Well, certainly not in 1796, but we can share our thoughts on the question of political parties in the form of a **tweet**—140 characters or less—in the box above.

---

## **Role Playing:**

**SLMS Career Day** is approaching and I want you to declare your occupation ... in 1796! Based on your 1796 Occupation (see above), please refer to the chart on the front side to choose a Political Party and explain your decision. (Place your response on the Twitter Board!)

# Occupations in 1796:

- Farmer
- Banker
- Teacher
- Lawyer
- Doctor
- Shop Owner
- Butcher
- Blacksmith
- Printer
- Writer
- Merchant
- Shipbuilder
- Carpenter
- Cobbler
- Tailor
- Grocer

# Election of 1796

Who were the candidates?

**Democratic Republicans**

Thomas Jefferson & Aaron Burr

(for President)

(for Vice President)

**Federalists**

John Adams & Thomas Pinckney

(for President)

(for Vice President)



# Election of 1796

Under the Constitution, the person with the most electoral votes became President and the next highest vote getter was made Vice President.

# Election of 1796

And the most electoral votes go to...

**Democratic Republicans**

Thomas Jefferson & Aaron Burr

(for President)

(for Vice President)

**Federalists**

John Adams & Thomas Pinckney

(for President)

(for Vice President)

**In second place and V.P. is...**



P R E S I D E N T  
A D A M S

FEDERALIST



V I C E P R E S I D E N T  
J E F F E R S O N

DEMOCRATIC  
REPUBLICAN

# Election of 1796

Why was this election result a problem?

Because having the President and Vice President from **OPPOSING** parties increased political tensions.